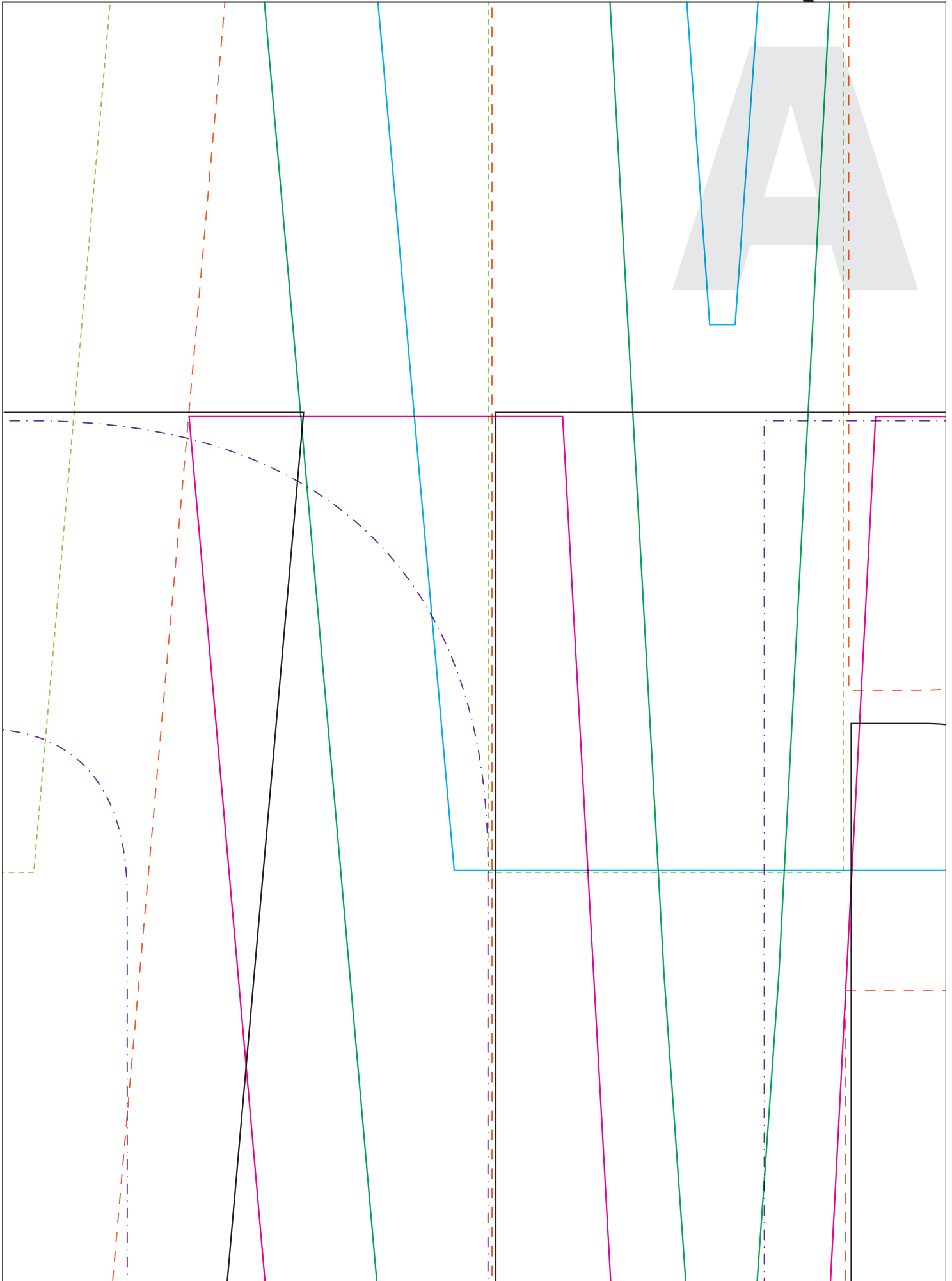


1. Printen in kleur op A4, 100%.
2. Knip het patroonvel uit langs de buitenste zwarte lijn.
Je houdt een vel over dat net iets kleiner is dan A4.





B

A large rectangular area containing various colored lines (solid, dashed, dotted) and a large grey letter 'B' for cutting practice. The page is divided into several vertical and horizontal sections by these lines. A large grey letter 'B' is positioned in the upper left quadrant. The lines are color-coded: green, pink, blue, purple, and red. Some lines are solid, some are dashed, and some are dotted. The lines are arranged in a way that suggests a complex cutting exercise, possibly for a craft project or a specific educational activity. The lines are arranged in a way that suggests a complex cutting exercise, possibly for a craft project or a specific educational activity.



C

A large rectangular area containing various colored lines (solid, dashed, dotted) and a large grey letter 'C' for tracing and cutting practice. The page is designed for a cutting activity. It features a large grey letter 'C' in the upper right quadrant. The page is divided into several vertical and horizontal sections by solid lines of different colors: blue, green, pink, and black. Dashed lines in various colors (red, purple, orange, blue) follow the outline of the letter 'C' and other shapes, serving as cutting guides. Dotted lines are also present, providing additional reference points. A pair of scissors icon is located at the top right, indicating the starting point for cutting.



D

